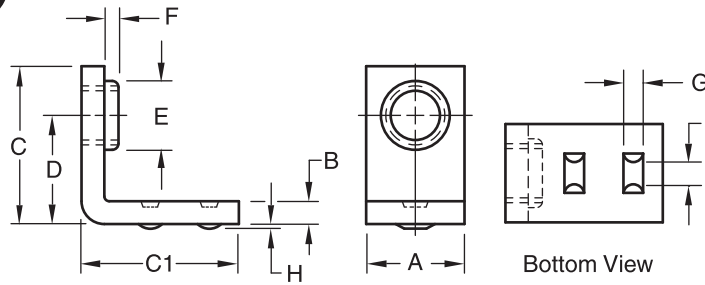
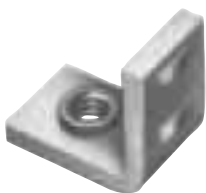


OHIO

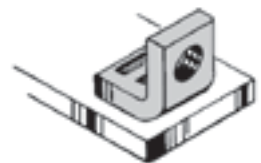
BT Weld Bracket



Part Number	Thread Size	Width	Thick.	Length of Leg From End to Angle		Ctr. of Hole To Angle	Pilot		Projection		
				A	B		C	C1	D	Dia.	Hgt.
BT 1402	#8-32	0.525	0.128	0.515	0.640	0.328	None	None	0.099	0.015	0.109
		0.500	0.122	0.485	0.610	0.296			0.089	0.009	0.079
BT 1403	#8-32	0.525	0.128	0.610	0.670	0.406	None	None	0.099	0.015	0.109
		0.500	0.122	0.580	0.640	0.375			0.089	0.009	0.079
BT 1503	#10-24	0.525	0.128	0.610	0.670	0.406	None	None	0.099	0.015	0.109
		0.500	0.122	0.580	0.640	0.375			0.089	0.009	0.079
BT 1603	#10-32	0.525	0.128	0.610	0.670	0.406	None	None	0.099	0.015	0.109
		0.500	0.122	0.580	0.640	0.375			0.089	0.009	0.079
BT 2101	1/4-20	0.525	0.128	0.765	0.765	0.484	0.307	0.05	0.114	0.023	0.140
		0.500	0.122	0.735	0.735	0.453	0.287		0.104	0.017	0.110
BT 2701	5/16-18	0.650	0.145	1.015	1.015	0.641	0.369	0.08	0.146	0.028	0.156
		0.625	0.139	0.985	0.985	0.609	0.349		0.136	0.022	0.126



The BT weld bracket, with its dual-line projections, provides a threaded hole at a right angle to the component to which it is welded. The BT is welded without drilling or punching a hole because it is attached to and not through the surface. The dual-line projections contain the right amount of metal, are uniform in height and length to assure a sound permanent offset thread to which the mating parts can be quickly and firmly attached.



In the larger thread sizes, there is a pilot that insures the proper thread engagement.

Material:C1010 High-Welding
Quality, Low Carbon Steel

Finish:Plain, Unless Specified

Threads:Unified Standard Class 2B
ASME B1.1-2003



The Ohio Nut and Bolt Company

Sales Office: Buckeye Fasteners • "Your Factory Source"

5250 West 164th Street • Cleveland Ohio 44142

Ph: (800)-437-1689 • Ph: (216)-267-2240 • Fax: (216) 267-3228

www.BuckeyeFasteners.com

A Division of Fastener Industries Inc. — An Employee Owned Company

© Copyright 2012 The Ohio Nut and Bolt Company

