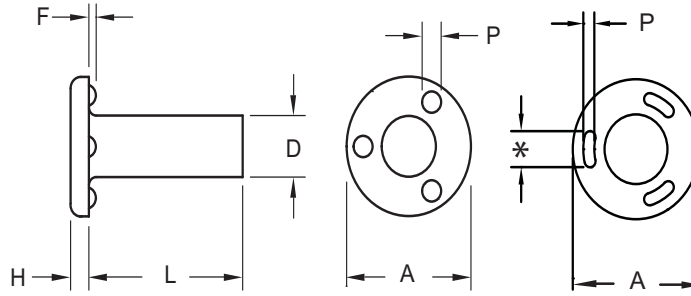


OHIO

PHZ Stainless Steel Weld Pin

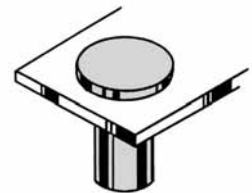


Body Diameter - D		0.119	0.144	0.163	0.190	0.218	0.250	0.277	0.335	0.375	0.500
Tolerance		0.119 0.114	0.144 0.140	0.163 0.159	0.190 0.185	0.218 0.213	0.250 0.244	0.277 0.271	0.335 0.328	0.375 0.368	0.500 0.492
Head	A-Dia.	0.323 0.303	0.385 0.365	0.448 0.428	0.510 0.490	0.575 0.550	0.635 0.610	0.755 0.725	0.880 0.850	0.880 0.850	1.005 0.975
	H-Height	0.052 0.042	0.068 0.058	0.068 0.058	0.083 0.073	0.083 0.073	0.083 0.073	0.099 0.089	0.114 0.104	0.130 0.120	0.146 0.136
Projections	P-Dia.	0.055 0.045	0.075 0.065	0.085 0.075	0.095 0.085	0.105 0.095	0.105 0.095	0.125 0.115	0.135 0.125	0.135 0.125	0.155 0.145
	F-Height	0.022 0.018	0.027 0.023	0.032 0.028	0.037 0.033	0.042 0.038	0.042 0.038	0.047 0.043	0.052 0.048	0.052 0.048	0.062 0.058
Length Under Head Tolerance +0.00 -0.03 Over 1" to 2" (Inclusive) +0.00 -0.06	1/4		PHZ 1404		PHZ 1904						
	5/16	PHZ 1105	PHZ 1405	PHZ 1605			PHZ 2505				
	3/8	PHZ 1106	PHZ 1406		PHZ 1906	PHZ 2106	PHZ 2506				
	1/2	PHZ 1108	PHZ 1408	PHZ 1608	PHZ 1908	PHZ 2108	PHZ 2508		PHZ 3308	PHZ 3708	
	5/8		PHZ 1410		PHZ 1910		PHZ 2510		PHZ 3310	PHZ 3710	
	3/4				PHZ 1912		PHZ 2512	PHZ 2712		PHZ 3712	PHZ 5013*
	1				PHZ 1916		PHZ 2516		PHZ 3316	PHZ 3716	
	1-1/8										PHZ 5019*
	1-1/4				PHZ 1920		PHZ 2520			PHZ 3720	
							PHZ 2524				
	2						PHZ 2532			PHZ 3732	

PLEASE NOTE PHZ 5013 and PHZ 5019 are new part numbers that denotes a change in projection style "P" as shown
* Projection length on these parts are 0.230 - 0.270



The PHZ stainless steel weld pin has three identical precision projections on the underside of the head permitting the pin to be used on through the hole applications. These projections also permit exact positioning and balance for optimum welds. In through-hole applications, the head of the pin is welded to the component's metal making a joint stronger than the surrounding area. This great strength makes the stainless steel PHZ weld pin ideal for hinge pins, bearing surfaces, structural supports and stops.



Recommended hole in sheet is .010 / .015 above the diameter.

Material: Austenitic Stainless Steel

Finish: Passivated



The Ohio Nut and Bolt Company

Sales Office: Buckeye Fasteners • "Your Factory Source"

5250 West 164th Street • Cleveland Ohio 44142

Ph: (800)-437-1689 • Ph: (216)-267-2240 • Fax: (216) 267-3228

www.BuckeyeFasteners.com

A Division of Fastener Industries Inc. — An Employee Owned Company

© Copyright 2012 The Ohio Nut and Bolt Company

