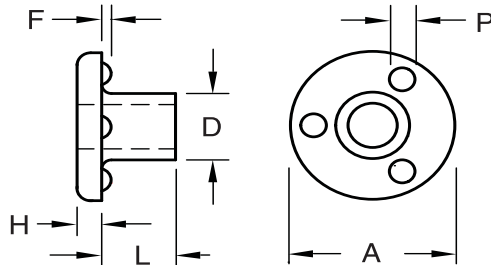


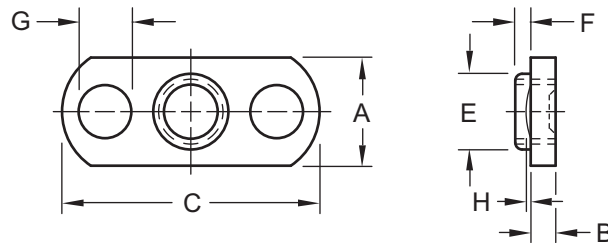
# OHIO

# RB & WN Special Purpose Parts



Part Number	Hole Dia.	Thickness Under Flange L	Body Dia. D	Flange		Projection	
				Dia. A	Height H	Dia. P	Height F
				RB 3108	0.318 0.312	0.515 0.495	0.500 0.492

The RB boss can be used as a bushing, guide or a bearing. It has no threads and three projections on the underside of the head to insure accuracy in positioning the RB boss.



Part Number	Thread Size	Width A	Thickness B	Length C	Pilot		Projection		Hole In Sheet
					Dia. E	Height F	Dia. G	Height H	
					WN 2724	5/16-18	0.655 0.620	0.145 0.139	

A dual tab projection weld nut, the WN is manufactured for use in locations requiring additional strength and where the tension is against the weld. The location of the twin tabs enables the WN nut to be used in bridging corners and on convex surfaces. The two large button projections on the WN provide great strength and are ideal for use with heavy gage material. A pilot speeds hand feeding and provides full thread engagement.

Material: .....C1010 High-Welding Quality, Low Carbon Steel

Finish: .....Plain, Unless Specified

Threads: .....Unified Standard Class 2B ASME B1.1-2003



## The Ohio Nut and Bolt Company

Sales Office: Buckeye Fasteners • "Your Factory Source"

5250 West 164th Street • Cleveland Ohio 44142

Ph: (800)-437-1689 • Ph: (216)-267-2240 • Fax: (216) 267-3228

[www.BuckeyeFasteners.com](http://www.BuckeyeFasteners.com)

A Division of Fastener Industries Inc. — An Employee Owned Company

© Copyright 2012 The Ohio Nut and Bolt Company

