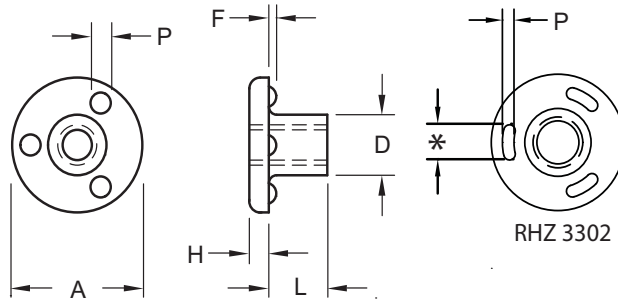


RHZ

Stainless Steel Weld Nut

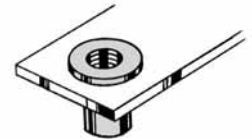


Part Number	Thread Size	Thickness Under Flange	Flange		Body	Projection	
			Dia.	Height	Dia.	Dia.	Height
			L	A	H	D	P
RHZ 1104	#6-32	0.265 0.245	0.635 0.605	0.083 0.073	0.250 0.244	0.105 0.095	0.042 0.038
RHZ 1404	#8-32	0.265 0.245	0.635 0.605	0.083 0.073	0.250 0.244	0.105 0.095	0.042 0.038
RHZ 1505	#10-24	0.327 0.307	0.755 0.725	0.099 0.089	0.277 0.271	0.125 0.115	0.047 0.043
RHZ 1605	#10-32	0.327 0.307	0.755 0.725	0.099 0.089	0.277 0.271	0.125 0.115	0.047 0.043
RHZ 2138	1/4-20	0.390 0.370	0.835 0.805	0.130 0.120	0.375 0.367	0.135 0.125	0.052 0.048
RHZ 2708	5/16-18	0.515 0.495	1.005 0.970	0.146 0.136	0.450 0.442	0.155 0.145	0.062 0.058
RHZ 3302*	3/8-16	0.515 0.495	1.005 0.970	0.146 0.136	0.500 0.492	Width 0.100 0.080	0.035 0.030

PLEASE NOTE RHZ 3302 is a new part number which denotes a change in projection style "P" as shown
 * Projection Length on these parts are 0.230 - 0.270



The stainless steel RHZ weld nut is a self-locating, through-hole weld nut with a long body and three weld projections on the underside of the head. Its self-locating feature facilitates positive positioning of the nut in holes for welding operation. The location of the three spherical projections on the underside of the head permits the body of the nut to be attached through a hole in the component. This provides a flush surface to which mating parts can be attached.



The rugged extra-long body of the RHZ weld nut allows its use as a bearing surface or structural support.

Material: Austenitic Stainless Steel

Finish: Passivated

Threads: Unified Standard Class 2B
 ASME B1.1-2003



The Ohio Nut and Bolt Company

Sales Office: Buckeye Fasteners • "Your Factory Source"

5250 West 164th Street • Cleveland Ohio 44142

Ph: (800)-437-1689 • Ph: (216)-267-2240 • Fax: (216) 267-3228

www.BuckeyeFasteners.com

A Division of Fastener Industries Inc. — An Employee Owned Company
 © Copyright 2012 The Ohio Nut and Bolt Company

