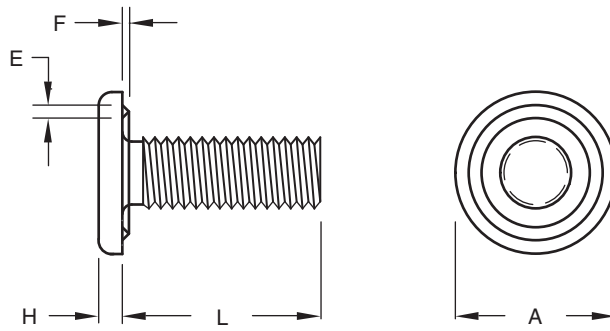


# OHIO



# RW Weld Screw

Recommended hole in sheet is .015 above the major diameter.

Thread Size		#6-32	#8-32	#10-32	1/4-20	5/16-18	3/8-16
Head	A-Diameter	0.323 0.303	0.385 0.365	0.448 0.428	0.575 0.550	0.755 0.725	0.880 0.850
	H-Height	0.052 0.042	0.068 0.058	0.068 0.058	0.083 0.073	0.099 0.089	0.114 0.104
Projections	E-Width (Ref.)	0.025	0.031	0.035	0.048	0.060	0.068
	F-Height	0.015 0.010	0.018 0.013	0.020 0.015	0.027 0.021	0.033 0.027	0.037 0.031
Length L (From Under The Head)	3/8	RW 1106	RW 1406				
	1/2		RW 1408	RW 1608	RW 2108		
Tolerance +.00 -.03	5/8				RW 2110	RW 2710	
	3/4				RW 2112	RW 2712	RW 3312
Over 1" to 2" (Inclusive) +.00 -.06	7/8				RW 2114		
	1		RW 1416		RW 2116	RW 2716	RW 3316
	1-1/4			RW 1620	RW 2120	RW 2720	RW 3320
	2					RW 2732	

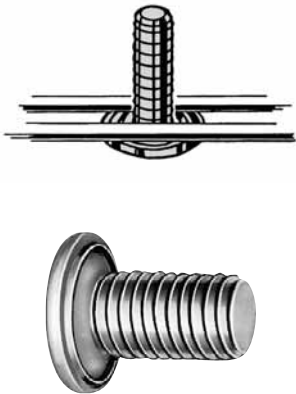
Material: C1010 High-Welding Quality, Low Carbon Steel  
 Finish: Plain, Unless Specified  
 Threads: Unified Standard Class 2A ASME B1.1-2003

Thread Size		5/16-18	3/8-16
Head	A-Diameter	0.755 0.725	0.880 0.850
	H-Height	0.099 0.089	0.114 0.104
Projections	E-Width (Ref.)	0.060	0.068
	F-Height	0.033 0.027	0.037 0.031
Length L (From Under The Head)	5/8	RWH 2710	RWH 3310
	3/4	RWH 2712	RWH 3312
Tolerance +.00 -.03	7/8	RWH 2714	RWH 3314
	1	RWH 2716	RWH 3316
Over 1" to 2" (Inclusive) +.00 -.06	1-1/4	RWH 2720	RWH 3320
	1-1/2	RWH 2724	RWH 3324

Material: C1022 HT RC 27-34  
 Finish: Plain, Unless Specified  
 Threads: Unified Standard Class 2A ASME B1.1-2003

# RWH Weld Screw

The RW (C1010 steel) and RWH (C1022 steel RC 27-34) weld screws, for through-hole applications, features a 360° ring projection that provides a circular weld seal. The large weld area on these screws provides additional weld strength. The full ring projection is also ideal for cross wire welding or welding to screen, perforated metal or tubing. Ring projections are often used in air conditioning and refrigeration applications where a leak proof seal is needed. The RWH series allows for greater installation torque in heavy duty applications.



## The Ohio Nut and Bolt Company

Sales Office: Buckeye Fasteners • "Your Factory Source"

5250 West 164th Street • Cleveland Ohio 44142

Ph: (800)-437-1689 • Ph: (216)-267-2240 • Fax: (216) 267-3228

[www.BuckeyeFasteners.com](http://www.BuckeyeFasteners.com)

A Division of Fastener Industries Inc. — An Employee Owned Company

© Copyright 2012 The Ohio Nut and Bolt Company

