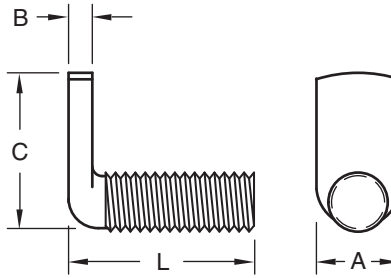


OHIO

SS Weld Screw



Thread Size		#6-32	#8-32	#10-24	#10-32	1/4-20	5/16-18	3/8-16
Spade	A (Ref.)	0.218	0.250	0.312	0.343	0.375	0.437	0.531
	B	0.052 0.042	0.068 0.058	0.068 0.058	0.068 0.058	0.099 0.089	0.130 0.120	0.161 0.151
	C (Ref.)	0.562	0.625	0.688	0.688	0.750	0.875	1.000
Length - L (Overall)	3/8		SS 1406	SS 1506	SS 1606			
	1/2	SS 1108	SS 1408	SS 1508	SS 1608	SS 2108		
	5/8		SS 1410	SS 1510		SS 2110	SS 2710	
	3/4		SS 1412	SS 1512	SS 1612	SS 2112	SS 2712	
Tolerance + .00 - .03	7/8					SS 2114		
	1		SS 1416	SS 1516	SS 1616	SS 2116	SS 2716	SS 3316
Over 1" to 2" (Inclusive) + .00 - .06	1-1/4			SS 1520		SS 2120	SS 2720	SS 3320
	1-1/2		SS 1424	SS 1524		SS 2124	SS 2724	SS 3324
	1-3/4					SS 2128		
	2			SS 1532		SS 2132	SS 2732	



The SS spot weld screw has an ideally shaped flat spade at a right angle to the threads. The spade offers dual advantages... it permits welding to or through metal surfaces. The spade accommodates various sizes of electrode tips. Because it is a spot weld part, the same settings, electrodes and welding equipment used normally in your production can also be utilized to apply SS spot weld screws. This screw is used to good advantage in confined areas such as narrow channels, walled corners and in those applications requiring threads offset from component surfaces



Recommended hole in sheet is .015 above the major diameter.

Material: C1010 High-Welding Quality, Low Carbon Steel Finish: Plain, Unless Specified

Threads: Unified Standard Class 2A
ASME B1.1-2003



The Ohio Nut and Bolt Company

Sales Office: Buckeye Fasteners • "Your Factory Source"

5250 West 164th Street • Cleveland Ohio 44142

Ph: (800)-437-1689 • Ph: (216)-267-2240 • Fax: (216) 267-3228

www.BuckeyeFasteners.com

A Division of Fastener Industries Inc. — An Employee Owned Company

© Copyright 2012 The Ohio Nut and Bolt Company

