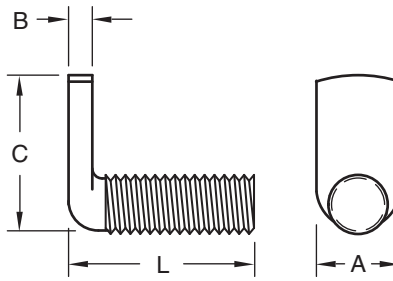


OHIO

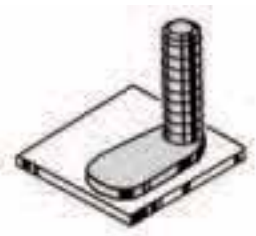
SSZ Stainless Steel Weld Screw



Thread Size		#6-32	#8-32	#10-24	#10-32	1/4-20	5/16-18	3/8-16
Spade	A (Ref.)	0.218	0.250	0.312	0.343	0.375	0.437	0.531
	B	0.052 0.042	0.068 0.058	0.068 0.058	0.068 0.058	0.099 0.089	0.130 0.120	0.161 0.151
	C (Ref.)	0.562	0.625	0.688	0.688	0.750	0.875	1.000
Length (Overall)	3/8	SSZ 1106	SSZ 1406	SSZ 1506	SSZ 1606			
	1/2	SSZ 1108	SSZ 1408	SSZ 1508	SSZ 1608	SSZ 2108		
	5/8		SSZ 1410	SSZ 1510		SSZ 2110	SSZ 2710	
	3/4		SSZ 1412	SSZ 1512	SSZ 1612	SSZ 2112	SSZ 2712	
Tolerance	+ .00					SSZ 2114		
	- .03							
Over 1" to 2" (Inclusive)	1		SSZ 1416	SSZ 1516	SSZ 1616	SSZ 2116	SSZ 2716	SSZ 3316
	1-1/4			SSZ 1520		SSZ 2120	SSZ 2720	SSZ 3320
	1-1/2		SSZ 1424	SSZ 1524		SSZ 2124	SSZ 2724	SSZ 3324
	1-3/4					SSZ 2128		
	2			SSZ 1532		SSZ 2132	SSZ 2732	



The SSZ stainless steel spot weld screw has an ideally shaped flat spade at a right angle to the threads. The spade offers dual advantages... it permits welding to or through metal surfaces. The spade accommodates various sizes of electrode tips. Because it is a spot weld part, the same settings, electrodes and welding equipment used normally in your production can also be utilized to apply SSZ stainless steel spot weld screws. This screw is used to good advantage in confined areas such as narrow channels, walled corners and in those applications requiring threads offset from component surfaces



Recommended hole in sheet is .015 above the major diameter.

Material: Austenitic Stainless Steel

Finish: Passivated

Threads: Unified Standard Class 2A
ASME B1.1-2003



The Ohio Nut and Bolt Company

Sales Office: Buckeye Fasteners • "Your Factory Source"

5250 West 164th Street • Cleveland Ohio 44142

Ph: (800)-437-1689 • Ph: (216)-267-2240 • Fax: (216) 267-3228

www.BuckeyeFasteners.com

A Division of Fastener Industries Inc. — An Employee Owned Company

© Copyright 2012 The Ohio Nut and Bolt Company

