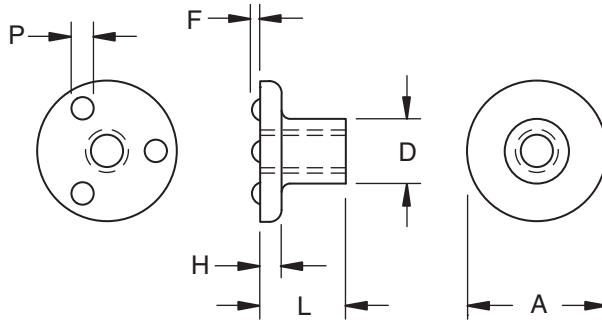


OHIO

WF Weld Nut

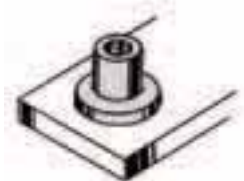


Part Number	Thread Size	Thickness (Overall)	Body Diameter	Flange		Projection	
				Dia.	Height	Dia.	Height
		L	D	A	H	P	F
WF 1105	#6-32	0.327	0.218	0.510	0.068	0.085	0.032
		0.307	0.213	0.480	0.058	0.075	0.028
WF 1405	#8-32	0.327	0.250	0.510	0.068	0.085	0.032
		0.307	0.244	0.480	0.058	0.075	0.028
WF 1537	#10-24	0.390	0.277	0.630	0.090	0.105	0.042
		0.370	0.271	0.600	0.080	0.095	0.038
WF 1637	#10-32	0.390	0.277	0.630	0.090	0.105	0.042
		0.370	0.271	0.600	0.080	0.095	0.038
WF 2150	1/4-20	0.515	0.375	0.815	0.114	0.135	0.052
		0.495	0.367	0.785	0.104	0.125	0.048
WF 2709	5/16-18	0.577	0.450	1.005	0.130	0.155	0.062
		0.557	0.442	0.970	0.120	0.145	0.058
WF 3310	3/8-16	0.640	0.500	1.005	0.130	0.155	0.062
		0.620	0.492	0.970	0.120	0.145	0.058



On the WF weld nut, the projections are located right on the top of the flange to permit welding to (rather than through) the surface of the component. Three precision projections of uniform height and mass are properly positioned on the flange to assure a weld that leaves the exterior surface of the component virtually unmarred.

This weld nut has been manufactured to give extra long thread engagement in blind hole applications. The long body of the nut can also function as a bearing or mounting surface or spacer.



Material:C1010 High-Welding Quality, Low Carbon Steel

Finish:Plain, Unless Specified

Threads:Unified Standard Class 2B ASME B1.1-2003



The Ohio Nut and Bolt Company

Sales Office: Buckeye Fasteners • "Your Factory Source"

5250 West 164th Street • Cleveland Ohio 44142

Ph: (800)-437-1689 • Ph: (216)-267-2240 • Fax: (216) 267-3228

www.BuckeyeFasteners.com

A Division of Fastener Industries Inc. — An Employee Owned Company

© Copyright 2012 The Ohio Nut and Bolt Company

